

FALL/WINTER 2014

NEW ENGLAND
WILD
FLOWER
SOCIETY



learn+grow

THE PROGRAMS OF NEW ENGLAND WILD FLOWER SOCIETY



Conserving and promoting
the region's native plants to
ensure healthy, biologically
diverse landscapes

Coming This Spring

MARCH

Plants and Climate Change Symposium

APRIL

Northern Gardening Symposium

MAY

Symposium on Native Plants in the Garden Landscape

NEW ENGLAND WILD FLOWER SOCIETY
180 Hemenway Road, Framingham, MA 01701
T 508-877-7630 F 508-877-3658
TTY 508-877-6553
registr@newenglandwild.org
www.newenglandwild.org

Volume 7, Number 2, Fall/Winter 2014

Learn + Grow is published twice a year by New England Wild Flower Society. Members receive discounts on all programs. Annual membership dues start at \$40 for individuals. See page 29 for information.

Copyright© 2014 New England Wild Flower Society®. All rights reserved. No material in this publication may be reproduced or used in any way without written consent. For permission, contact Editor, New England Wild Flower Society, 180 Hemenway Road, Framingham, MA 01701.

Printed on recycled paper.
Editor: Julia Homer
Design: Rachel Wolff Lander

This publication was made possible through the generosity of Jackie and Tom Stone.

ON THE COVER

River birch (*Betula nigra*)
Photo: Steven Ziglar

Continuing Education Units (CEUs)

Many of our programs now qualify for continuing education units. Look for a list of CEUs under the program descriptions. We have been approved for the following CEUs:

- **AOLCP** (Northeast Organic Farming Association Accredited Organic Land Care Professionals)
- **CFE** (Society of American Foresters' Continuing Forestry Education)

- **ISA** (International Society of Arboriculture)
- **MCH** (Massachusetts Certified Horticulturist)

We have applied for CEUs from **APLD** (The Association of Professional Landscape Designers)

Please visit
www.newenglandwild.org/learn/ceu
for the most up-to-date information on programs qualifying for CEUs.

contents

Coming this Spring Certificate Programs	1 3				
Date	Program	State	Page		
10/1	Certificate Orientation	MA	3		
HORTICULTURE + GARDENING					
9/12	Wellesley Garden Walk with Karen Sebastian	MA	4		
9/16	Native Woody Plant Materials	MA	4		
9/25	Small Motor and Garden Tool Maintenance	MA	5		
9/28	Wild Edibles Talk and Walk	MA	5		
10/2	Drafting Techniques in Landscape Design	MA	6		
10/3	Native Plants with Native Brews	MA	6		
10/4	Fall Planting of Trees and Shrubs	MA	7		
10/7	Horticultural Techniques	MA	7		
10/11	Wild Plants in the Not-so-Wild Garden	MA	8		
10/18	Meadows Large or Small for the Home and Community Landscape	CT	8		
10/20	Past and Future of a Legendary Garden	MA	8		
10/25	Fall in the Garden	MA	9		
11/15	Pruning Fundamentals	MA	9		
12/6	Wildflower Propagation II	MA	10		
12/9	Wildflower Propagation II	MA	10		
1/26	Residential Landscape Design	MA	10		
2/3	Residential Landscape Design	MA	10		
2/9	Understanding and Managing Healthy Soils	MA	11		
2/24	Native Alternatives to Problem Plants	MA	11		
3/2	Bones of the Garden: Strengthening the Design	MA	12		
3/5	Right Plant Community, Right Place: Designing a Native Plant Garden from the Ground Up	CT	12		
3/11	Getting Started with Home Landscaping	MA	12		
3/12	Native Edibles and Herbs	MA	13		
3/25	Organic Pest Management	MA	13		
3/28	A Dragon's Lair: Creating a Dragonfly Habitat in Your Back Yard	CT	13		
BOTANY + CONSERVATION					
9/4	Native New England Shrubs	MA	14		
9/7	Life on the Leaf Edge: The Caterpillars of Wampanoag Sanctuary	MA	14		
9/13	Are you going to Scarborough Marsh?	ME	15		
9/18	Plant Form and Function	MA	15		
9/20	Ferns of Horn Pond Mountain	MA	15		
9/23	Introduction to Botany	MA	16		
9/24	Woodlands of the Mineral Hills	MA	16		
9/26	New England Invasive Plants: Identification, Documentation, and Control	MA	17		
9/27	Lichens on Monuments and Rock Walls in Cemeteries	MA	17		
10/4	Ponemah Bog	NH	17		
10/5	Estabrook Woods from Boaz's Meadow to Bateman's Pond	MA	18		
10/7	Framework Trees of New England	MA	18		
10/18	Identifying Trees Using Bark and Habitat Clues: Merrimack River Conservation Area Floodplain Forest	NH	19		
10/19	Wild Fruits	MA	19		
10/19	Ecology of Highstead	CT	20		
10/22	Strange but True: Fascinating Plant Behaviors	MA	20		
10/25	Hurricanes, Invasions, and Restoration: A Salt Marsh Odyssey	RI	20		
10/26	Annual Native Plant Lecture and Certificate Awards	MA	21		
11/2	Lichens of the Norman Bird Sanctuary	RI	21		
11/18	Wetland Shrubs in Winter	MA	21		
11/23	Understanding Botanical and Horticultural Names: Plant Systematics Module 1	MA	22		
12/3	Plants, Paper, and People: the Story of GROVE	MA	22		
12/6	Shrubs in Winter	MA	22		
1/17	Conservation Biology	MA	23		
1/25	Plant Systematics Module 2	MA	23		
2/4	Wetland Shrubs in Winter	MA	21		
2/25	Amazing Alpine Communities of the Northeast	MA	24		
3/1	Plant Systematics Module 4	MA	24		
ART IN NATURE					
9/28	Observing to Learn: Botany in the Field	CT	25		
10/4	Plant Macrophotography	ME	26		
10/5	Drawing to Learn: Botany in the Field	CT	25		
10/29	Introduction to Botanical Drawing	MA	26		
1/7	Color Techniques in Botanical Illustration	MA	26		
CHILDREN + FAMILIES					
10/5	Meet the Trees	MA	27		
11/7	Full Moon Night Hike	MA	27		
1/18	Winter Wonders Walk	MA	28		
3/22	Salamander Celebration	MA	28		
Become a Member					
Registration Policies					
How to Register					

certificate programs

Whether you are interested in taking classes for fun, adding breadth and depth to your existing knowledge and skills, or advancing your career, New England Wild Flower Society's self-paced certificate programs in Native Plant Studies offer a unique opportunity to learn about the region's flora. Our dedicated instructors provide a comprehensive education in the identification, cultivation, ecology, and conservation of native New England plants.

Students enrolled in our certificate programs gain a greater appreciation and understanding of native plant habitats, common and rare plant species, conservation issues, and uses of native plants in horticulture and design. In addition, students actively participate in ongoing public and private efforts to preserve and restore native New England flora.

We offer basic and advanced certificate programs in:

- Field Botany
- Native Plant Horticulture and Design.

Each certificate requires completion of core courses, elective classes, field studies, and community service. Advanced certificates also require the completion of a Native Plant Community Service Leadership Project.

CERTIFICATE ORIENTATION

Join Jessica Pederson, Director of Public Programs for New England Wild Flower Society, and certificate program graduates to learn about the curriculum and structure of the Society's Certificate in Native Plant Studies programs. Everyone is welcome at this free presentation. Preregistration is requested, but not required.

Wednesday, October 1, 6:30-8 p.m.

Garden in the Woods, Framingham, MA

Program Code: CER8000

Instructor: Jessica Pederson, Director of Public Programs, New England Wild Flower Society

ENROLL NOW!

Complete the certificate registration form on page 30 of this catalog or visit us online at

www.newenglandwild.org/learn/certificate

to learn more.

There is a one-time certificate enrollment fee of \$30. Join the Society to receive discounts on programs.

CERTIFICATE CREDIT

FB=Field Botany basic certificate

Adv. FB=Field Botany advanced certificate

HD=Native Plant Horticulture and Design basic certificate

Adv. HD=Native Plant Horticulture and Design advanced certificate

Field=botanical, horticultural, or design field studies

Core=Core Courses

Elective=Elective Classes

PDW=Professional Design Workshops

Some programs satisfy more than one requirement.

horticulture + gardening

WELLESLEY GARDEN WALK WITH KAREN SEBASTIAN

Join Landscape Architect Karen Sebastian for a walk through a lovely residential garden in Wellesley. The garden has a series of features including a woodland walk, a perennial garden with mature native and non-native plants, a brick terrace surrounded with shade-loving plants, and many specimen trees. Sebastian, who has worked closely with the owner of this garden for over ten years, will discuss the evolution of the garden over time from conceptual ideas through development of the design, construction of the spaces, special features, choices of plants, changes over time, and on-going maintenance.

Friday, September 12, 10 a.m.-12 p.m.

Wellesley, MA

Program Code: HDT1045

Instructor: Karen Sebastian, Principal, Karen Sebastian, LLC, Landscape Architecture

Fee: \$24 (Member) /\$28 (Nonmember)

Limit: 15

Certificate: Field: HD/Adv.HD

NATIVE WOODY PLANT MATERIALS

Native trees, shrubs, and woody vines can provide a year-round framework for New England gardens. This course explores the diversity of our native woody species and their uses in home gardens and surrounding landscapes. We stress growth characteristics, cultural requirements, and the best horticultural uses of the woody plants currently commercially available. Which species grow well in heavy shade? Which can be used to support local wildlife and/or humans? Which work best in landscapes under heavy deer pressure? Learn how to stagger your plantings for continuous bloom, fruit production, and fall color. This intensive course



will serve anyone wanting to work at a professional level but is also appropriate for the avid home gardener. The program includes lectures and walks in the Garden as well as a field study at The Arnold Arboretum. Bring a bag lunch each day.

Tuesday, September 16, 10 a.m.-3 p.m.;

Thursday, September 18, 10 a.m.-1 p.m.

**(Arboretum Study); Tuesday, September 23,
10 a.m.-3 p.m.**

Garden in the Woods, Framingham, MA, and
The Arnold Arboretum, Jamaica Plain, MA

Program Code: HOR1100

Instructor: Dan Jaffe, Propagator and Stock
Bed Grower, New England Wild Flower
Society

Fee: \$160 (Member) /\$200 (Nonmember)

Limit: 16

Certificate: Core: HD; Elective: all certificates

CEU: 8 ISA; 1 CFE; 1 MCH

horticulture + gardening

SMALL MOTOR AND GARDEN TOOL MAINTENANCE

Have you ever walked into your shed and become overwhelmed by all the tools in need of maintenance? Do you wonder if that rusty shovel is still good or that dusty weed-wacker still runs? Learn all the basic maintenance procedures any homeowner can perform to reclaim old tools, extend the life of reliable tools, and retain the value of new ones. Topics include oil changes, greasing, air-filter cleaning and replacement, fuel facts, winterization, and storage as well as troubleshooting tips and techniques for maintaining your hand tools. Learn how to sharpen blades, remove rust, replace handles, and keep all your gardening equipment ready for use when you need it.

Thursday, September 25, 9 a.m.-12 p.m.

Garden in the Woods, Framingham, MA

Program Code: HOR3351

Instructor: Nate McCullin, Senior Horticulturist, New England Wild Flower Society

Fee: \$40 (Member) /\$48 (Nonmember)

Limit: 16

Certificate: Elective: HD/Adv.HD

WILD EDIBLES TALK AND WALK

From the woods to the meadows to our gardens, wild edibles are all around. Join Dan Jaffe for a comprehensive look at the wild plants that can fill your belly. This workshop will cover finding edibles in the wild as well as growing them in your own garden. Questions concerning conservation of rare edible species will also be addressed.

Sunday, September 28, 1-3 p.m.

Tower Hill Botanic Garden, Boylston, MA

Program Code: HOR6020

Instructor: Dan Jaffe, Propagator and Stock Bed Grower, New England Wild Flower Society

Fee: \$20 (Member) /\$30 (Nonmember)

Limit: 26

Certificate: Elective: HD/Adv.HD

Cosponsor: Tower Hill Botanic Garden

CEU: 3 AOLCP



horticulture + gardening



DRAFTING TECHNIQUES IN LANDSCAPE DESIGN

Gain knowledge and skills that you can apply to your own landscaping projects during this hands-on drafting workshop. Anna Fialkoff draws on her training in landscape design to teach techniques for drafting landscape plans. Using a small section of Garden in the Woods as a case study, you will go into the field with drafting pens, notebooks, and a tape measure to record what you see. Then you will learn how to translate this three-dimensional space into a two-dimensional basemap, which is the first step in any design process.

Thursday, October 2, 1-4 p.m.

Garden in the Woods, Framingham, MA

Program Code: HOR1524

Instructor: Anna Fialkoff, Horticulturist, New England Wild Flower Society

Fee: \$40 (Member) / \$48 (Nonmember)

Limit: 10

Certificate: Elective: HD/Adv.HD

CEU: ½ MCH

NATIVE PLANTS WITH NATIVE BREWS

Join Mark Richardson for a tour of Garden in the Woods. This is a unique opportunity to enjoy the native fall foliage while reconnecting with native talent (colleagues) and sharing your favorite native brew (BYOB – Bring Your Own Beer). Native soft drinks will be provided. This program is designed for horticulture and landscape professionals, but all are welcome.

Friday, October 3, 5:30-8 p.m.

Garden in the Woods, Framingham, MA

Program Code: HOR2094

Instructor: Mark Richardson, Director of Horticulture, New England Wild Flower Society

Fee: \$25 (Member) / \$30 (Nonmember)

Limit: 35

Cosponsor: Ecological Landscaping Association

CEU: ½ MCH

horticulture + gardening

FALL PLANTING OF TREES AND SHRUBS

Take advantage of cooler temperatures in the fall to plant something new before winter begins. It's very satisfying to look upon a tree you have planted yourself, especially years later, but ensuring that a tree gets a healthy start involves much more than just digging a hole. In the lecture portion of this program, we will learn tips for nursery selection, site preparation, proper planting technique, and aftercare for trees, shrubs, and woody vines. A brief overview of contemporary air-spading technique will also be provided. Following the lecture, we will go outside to plant both ball-and-burlap and container-grown plants to reinforce the skills taught in the classroom.

Saturday, October 4, 10 a.m.-12 p.m.

Garden in the Woods, Framingham, MA

Program Code: HOR3006

Instructor: Jen Kettell, Horticulturist, The Arnold Arboretum

Fee: \$30 (Member) /\$35 (Nonmember)

Limit: 16

Certificate: Elective: HD/Adv.HD

CEU: 2 ISA; ½ MCH

HORTICULTURAL TECHNIQUES

Good horticultural practices form the backbone of any successful garden. Understanding how to apply these practices is the first step to becoming a horticulturist. In this three-session course, the horticulture staff of New England Wild Flower Society will discuss how to plant native plants and choose the right plant for the right place. Students will practice proper techniques for transplanting woody and herbaceous plant material and learn the correct methods for preparing soil, mulching, and watering.



Other topics include plant maintenance, pruning techniques, and steps for winterizing the garden and preparing it for spring. Bring a bag lunch.

Tuesdays, October 7, 14, 21, 10 a.m.-3 p.m.

Garden in the Woods, Framingham, MA

Program Code: HOR3600

Instructor: New England Wild Flower Society Horticulture Staff

Fee: \$231 (Member) /\$272 (Nonmember)

Limit: 16

Certificate: Core: HD, Elective: all certificates

CEU: 8 ISA; 1 MCH

horticulture + gardening

WILD PLANTS IN THE NOT-SO-WILD GARDEN

Many North American native plants have been selected and cleverly repackaged for use in ornamental gardens. Often given charming names like ‘Pow-Wow Raspberry,’ ‘Chocolate,’ or ‘Running Tapestry,’ they are barely recognizable as the cousins of the plants so familiar in the nearby wild landscape. These glamorous cousins can be lovely indeed, and in some cases are particularly well-suited for use in modern gardens. But sometimes the native plant, neither repackaged nor altered, is the perfect choice. Join Joann Vieira for a presentation and garden walk to look at North American plants used in formal garden settings and cultivated using sustainable gardening practices.

Saturday, October 11, 10 a.m.-12 p.m.

Tower Hill Botanic Garden, Boylston, MA

Program Code: HDT1047

Instructor: Joann Vieira, Horticulture Director, Tower Hill Botanic Garden

Fee: \$20 (Member) / \$30 (Nonmember)

Limit: 26

Certificate: Field: HD/Adv.HD

Cosponsor: Tower Hill Botanic Garden

CEU: 2 AOLCP; ½ MCH

MEADOWS LARGE OR SMALL FOR THE HOME AND COMMUNITY LANDSCAPE

Fall is a great time to plant meadows. Join Kathy Connolly for a two-hour discussion that will help demystify these ecologically valuable spaces and outline planting approaches. Kathy will explain what a meadow is, why native species are important, and what steps you can take right now to start planting a meadow. After the lecture, you can purchase seeds, books, and native

seedlings grown especially for this event by New England Wild Flower Society’s Nasami Farm (cash or checks only; no credit cards). Coffee and tea are provided; feel free to bring munchies or a sandwich.

Saturday, October 18, 10 a.m.-12 p.m.

Middletown, CT

Program Code: HOR4301

Instructor: Kathy Connolly, Landscape Designer

Fee: \$26 (Member) / \$32 (Nonmember)

Certificate: Elective: HD/Adv.HD

Cosponsor: Connecticut Forest & Park Association

CEU: ½ MCH

PAST AND FUTURE OF A LEGENDARY GARDEN

Join Kristin DeSouza, superintendent of the Allen C. Haskell Public Gardens, on a tour of this exceptional place. Called “a nurseryman with an artist’s eye,” and “the king of topiary,” Haskell gained renown for his personal garden as well as his design skills. Now this unique property, including an eighteenth-century farmhouse on six acres in New Bedford, MA, is being turned into a public garden. Kristin will describe the garden’s unusual plant specimens and horticultural techniques while explaining the work involved in preserving Haskell’s legacy for a new generation.

Monday, October 20, 9-11 a.m.

Allen C. Haskell Public Garden, New Bedford, MA

Program Code: HDT1046

Instructor: Kristin DeSouza, Superintendent of the Allen C. Haskell Public Gardens, The Trustees of Reservations

Fee: \$24 (Member) / \$28 (Nonmember)

Limit: 24

Certificate: Field: HD/Adv.HD

horticulture + gardening

FALL IN THE GARDEN

Fall in the garden...and then get up and get inspired! Learn about fall garden practices in this hands-on workshop. Get tips on planting, dividing, pruning, and preparing for the winter months. This combined garden walk/gardening workshop will be held in a beautiful two-acre garden that includes a native plant woodland, a large vegetable garden, an orchard, and diverse perennial beds.

Saturday, October 25, 1-3 p.m.
(Rain Date **November 2, 1-3 p.m.**)

Lincoln, MA

Program Code: HDT1028

Instructor: Robin Wilkerson, Landscape Designer

Fee: \$24 (Member) /\$28 (Nonmember)

Limit: 20

Certificate: Field: HD/Adv.HD

PRUNING FUNDAMENTALS

Proper pruning improves the structure and health of trees and shrubs. It also enhances the plants' aesthetic qualities. This workshop will cover pruning methods for established plantings in the home landscape. Learn when to prune different species and how to select basic tools, determine which branches to cut, and how to make a proper cut. Bring your own hand pruners so you can practice!

Saturday, November 15, 9:30 a.m.-12:30 p.m.
Garden in the Woods, Framingham, MA

Program Code: HOR3120

Instructor: David Ropes, Arborist, Tree Specialists, Inc.

Fee: \$40 (Member) /\$48 (Nonmember)

Limit: 16

Certificate: Elective: HD/Adv.HD

CEU: 3 ISA; ½ MCH



horticulture + gardening



WILDFLOWER PROPAGATION II

Learn tips for growing wildflowers from seed so you can enjoy an astonishing variety of species not often seen in garden centers. You will develop a deeper appreciation of plant physiology and evolution and learn techniques for germinating and growing a wide range of native species, including such challenging genera as *Trillium*. You will discuss collection and storage of seeds and spores, and clean and sow seeds to grow at home. All materials are provided. Bring a bag lunch.

Instructor: Kate Stafford, Plant Propagator, New England Wild Flower Society

Fee: \$53 (Member) /\$64 (Nonmember)

Certificate: Elective: HD/Adv.HD

CEU: 1 MCH

Choose one of two sections:

Saturday, December 6, 10 a.m.-2 p.m.

Nasami Farm, Whately, MA

Program Code: HOR3203

Limit: 16

Tuesday, December 9, 10 a.m.-2 p.m.

Garden in the Woods, Framingham, MA

Program Code: HOR3201

Limit: 16

RESIDENTIAL LANDSCAPE DESIGN

This multisession course, appropriate for beginners, tackles the different aspects of the landscape design process. Workshop sessions focus on design methods using site analysis techniques and schematic design tools. You will consult with the instructor and work on a project of your own choosing. Discussions about plants and habitat will be interspersed with design principles, including criteria for making plant choices and determining placement in the landscape. A list of required materials will be provided at the first class.

Fee: \$215 (Member) /\$254 (Nonmember)

Certificate: Core: HD

CEU: 1 MCH

Choose one of two sections:

Monday, January 26, 6-9 p.m.; Wednesday, January 28, 6-9 p.m.; Thursday, January 29, 6-9 p.m.; Sunday, February 1, 12:30-5:30 p.m.

Garden in the Woods, Framingham, MA

Program Code: HOR4000

Instructor: Cheryl Salatino, Landscape Designer, Dancing Shadows Garden Design, and Massachusetts Certified Horticulturist

Limit: 12

Tuesdays, February 3, 10, 17, 24, March 3, 10, 17, 5:30-7:30 p.m.

Cambridge Center for Adult Education, Cambridge, MA

Program Code: HOR4002

Instructor: Karen Sebastian, Principal, Karen Sebastian, LLC, Landscape Architecture

Limit: 12

Cosponsor: Cambridge Center for Adult Education

horticulture + gardening

UNDERSTANDING AND MANAGING HEALTHY SOILS

A working knowledge of the physical, chemical, and biological properties of soil will help you determine which plants will thrive in your garden. In this three-session course, you will learn how to evaluate and perhaps improve your garden's soil, how to choose the right plants for your soil conditions, and how to maintain soil health and fertility through organic practices. Whether you are an experienced gardener or a novice, this class will help you develop a better understanding of the importance of soil to your garden.

Monday, February 9; Wednesday, February 11; Friday, February 13 (snow dates **February 10 and 12**), **10 a.m.-1:30 p.m.**

Garden in the Woods, Framingham, MA

Program Code: HOR3904

Instructor: Mark Richardson, Horticulture Director, New England Wild Flower Society

Fee: \$138 (Member) /\$163 (Nonmember)

Limit: 16

Certificate: Core: HD/Adv.HD; Elective: all certificates

CEU: 1 MCH

NATIVE ALTERNATIVES TO PROBLEM PLANTS

Why grow invasive burning bush for its one season of interest when you could grow native blueberry, a multiseason star? Isn't it time to replace boring, weedy vinca with something more dynamic, like 'GroLo' sumac? Andrew Keys, author of *Why Grow That When You Can Grow This?*, discusses native alternatives that are sexier and more sustainable than everyday problem plants. Book signing at the end of class.

Tuesday, February 24, 2-3:30 p.m.

Garden in the Woods, Framingham, MA

Program Code: HOR2114

Instructor: Andrew Keys, Author

Fee: \$26 (Member) /\$32 (Nonmember)

Limit: 16

Certificate: Elective: HD/Adv.HD

CEU: ½ MCH



horticulture + gardening

BONES OF THE GARDEN: STRENGTHENING THE DESIGN

Every memorable landscape has something in common—strong “bones.” The placement of trees and shrubs creates form, directs movement, and organizes the garden. Learn to situate and integrate these stately elements into the cultivated landscape. Explore the concepts of scale, the creation of space, and the impact of change over time. You will experience first-hand how understanding these concepts can change your approach. Using this knowledge, you will develop your own site-specific design and receive feedback on design structure and plant combinations. During the final session of this course, inspect the “bones” of Garden in the Woods with a late winter walk.

Monday, March 2; Wednesday, March 4, 6:30-9 p.m.; Saturday, March 7, 9:30 a.m.-1:30 p.m.

Garden in the Woods, Framingham, MA

Program Code: PDW4223

Instructor: Cheryl Salatino, Landscape Designer, Dancing Shadows Garden Design, and Massachusetts Certified Horticulturist

Fee: \$138 (Member) /\$163 (Nonmember)

Limit: 16

Certificate: PDW; Core: Adv.HD; Elective: HD

CEU: 1 MCH

RIGHT PLANT COMMUNITY, RIGHT PLACE: DESIGNING A NATIVE PLANT GARDEN FROM THE GROUND UP

We often hear the mantra, “right plant, right place,” but it’s sometimes difficult for home gardeners to determine exactly what that means—and frustrating when the plants chosen fail. A little bit of homework and a look to nature can help us make better plant choices. Learn how to evaluate your garden to determine which plant communities will



thrive in your environment, and what resources are available to help you find the right plant for the right place.

Thursday, March 5, 10 a.m.-1 p.m.

Greenwich Audubon, Greenwich, CT

Program Code: HOR1512

Instructor: Mark Richardson, Horticulture Director, New England Wild Flower Society

Fee: \$12 (Member) /\$15 (Nonmember)

Certificate: Elective: HD/Adv.HD

Cosponsor: Greenwich Audubon

CEU: ½ MCH

GETTING STARTED WITH HOME LANDSCAPING

Learn the basics of landscaping your property. This two-part class teaches you how to determine the right plants for the various conditions in different parts of your yard. You will also get tips on planting, watering and keeping your gardens healthy over the long-term using earth-friendly practices that are safe for your family, pets, and the planet.

Wednesday, March 11 and 18, 6:30-8 p.m.

Garden in the Woods, Framingham, MA

Program Code: HOR4027

Instructor: Ellen Sousa, Garden Coach, Author, Habitat Garden Landscaper

Fee: \$26 (Member) /\$32 (Nonmember)

Limit: 16

Certificate: Elective: HD

horticulture + gardening

NATIVE EDIBLES AND HERBALS

Whether you are interested in healthy, novel, or unusual foods, or are simply interested in applying botany to your everyday life, this class will enhance your knowledge of native edibles and herbals. From cucumber root to Oswego tea, wild edibles and medicinal plants are everywhere. In this program, students will learn how to recognize and utilize them. Dan Jaffe and Anna Fialkoff will address safe and sustainable best practices as they explore common, rare, and threatened species for forage and cultivation.

Thursday, March 12, 10 a.m.-12 p.m.

Garden in the Woods, Framingham, MA

Program Code: HOR2093

Instructors: Dan Jaffe, Propagator and Stock Bed Grower, New England Wild Flower Society and Anna Fialkoff, Horticulturist, New England Wild Flower Society

Fee: \$26 (Member) /\$32 (Nonmember)

Certificate: Elective: all certificates

ORGANIC PEST MANAGEMENT

Too often, a gardener's response to insect pests or diseases is eradication, when all that's really necessary is a little patience. Native plant gardens contribute to local ecosystems in myriad ways, but we limit their value when we apply pesticides. Learn how the horticulturists at Garden in the Woods use organic practices to manage plant health care in the Garden and how you can do the same at home.

Wednesday, March 25, 6 -9 p.m.

Garden in the Woods, Framingham, MA

Program Code: HOR2022

Instructor: Mark Richardson, Horticulture Director, New England Wild Flower Society

Fee: \$40 (Member) /\$48 (Nonmember)

Certificate: Elective: HD/Adv.HD

CEU: 3 AOLCP; ½ MCH

A DRAGON'S LAIR: CREATING A DRAGONFLY HABITAT IN YOUR BACK YARD

Wings glistening in the sunlight, a dragonfly swooshes past you to pick up a juicy mosquito. These tough insect predators help to keep nature's critical balance. In this class, you will learn how to create a dragonfly's lair: discover which grasses attract the leafhopper and which call a dragonfly down from its perch. Learn about dragonfly habitats, life cycles, mating, and foraging. Follow these winged jewels as they fly from spring into autumn. A prerequisite to this lecture is a sense of wonder!

Saturday, March 28, 10 a.m.-11:30 p.m.

Yale Peabody Museum of Natural History, New Haven, CT

Program Code: HOR5042

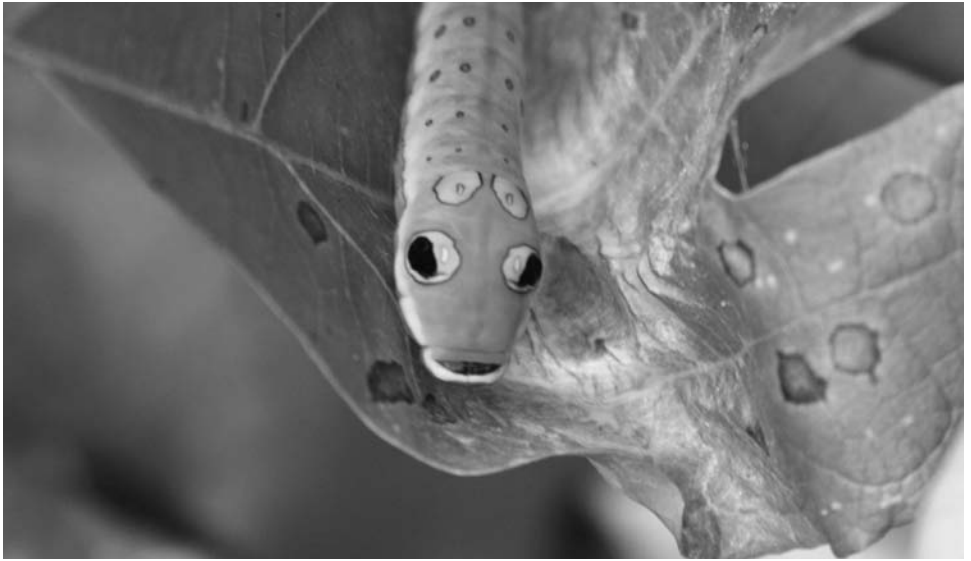
Instructor: Christine Cook, APLD, is an artist, educator, landscape designer, and owner of Mossaics

Fee: \$15 (Member) /\$20 (Nonmember)

Certificate: Elective: HD/Adv.HD

Cosponsor: Yale Peabody Museum of Natural History





NATIVE NEW ENGLAND SHRUBS

This course will introduce students to about 50 species of native New England shrubs, which vary widely in size, shape, color, and characteristics of bark, flowers, and fruits. We will emphasize plant identification, family characteristics, and historic uses. Bring a hand lens to each session. Weekend sessions are held in off-site locations; directions will be provided during the first class.

Thursdays, September 4, 11, 18, 6:30-8:45 p.m.;

Saturdays, September 6, 13, 9 a.m.-1:30 p.m.

Garden in the Woods, Framingham, MA, and field sites

Program Code: BOT3300

Instructor: Roland "Boot" Boutwell, Naturalist

Fee: \$238 (Member) /\$280 (Nonmember)

Limit: 15

Certificate: Core: FB/HD; Elective: all certificates

CEU: 1 CFE; 1 MCH

LIFE ON THE LEAF EDGE: THE CATERPILLARS OF WAMPANOAG SANCTUARY

The rolling meadows, beaver pond, and swampy evergreen woods of Lake Wampanoag Wildlife Sanctuary play host to innumerable butterflies, dragonflies, mantids, and beetles. The sanctuary is also home to a great diversity of native caterpillars. Join Sam Jaffe in exploring this caterpillar world in search of bizarre snake-mimics, horned sphinxes, and vibrant owlets. Learn how to uncover these and other well-hidden insects. The New England woods will never look the same.

Sunday, September 7, 1-4 p.m.

Gardner, MA

Program Code: FDT5043

Instructor: Sam Jaffe, Naturalist-
Photographer and Caterpillar Expert

Fee: \$28 (Member) /\$35 (Nonmember)

Limit: 16

Certificate: Elective: FB/Adv.FB

Cosponsor: Mass Audubon

botany + conservation

ARE YOU GOING TO SCARBOROUGH MARSH?

Join Ted Elliman on an exploration of Scarborough Marsh. Owned and managed by the Maine Department of Inland Fisheries and Wildlife, the 3,100-acre estuary is the largest salt marsh in the state, comprising tidal marsh, salt creeks, freshwater marsh, and uplands. The marsh not only has a great diversity of plants; it is also very important as a nesting, breeding, and feeding ground for wildlife. During our visit we will investigate the flora of the salt marsh, including *Spartina* grasses, black grass, glasswort, sea lavender, silver-weed, seaside goldenrod, salt-marsh aster, narrow-leaf cattail, and many other species. Bring a bag lunch and water. Paths may be wet, so wear appropriate footwear.

Saturday, September 13, 11 a.m.-2 p.m.

Scarborough, ME

Program Code: FDT3022

Instructor: Ted Elliman, Botanist

Fee: \$28 (Member) /\$35 (Nonmember)

Limit: 16

Certificate: Field: FB/Adv.FB

CEU: 1 CFE

PLANT FORM AND FUNCTION

This course provides an introduction to botany basics, including plant anatomy and physiology. Students will be introduced to the plant kingdom through slides and live materials. Microscopic study will allow for detailed observation of roots, stems, leaves, and their component tissues, while examination of flowers, fruits, and seeds will reveal the details of pollination, fertilization, dispersal, and germination, emphasizing the relationship between plant form and function.

Thursdays, September 18, 25, October 2, 9, 16, 6:30-9 p.m.

Bentley University, Waltham, MA

Program Code: BOT1000

Instructor: Nancy M. Eyster-Smith, Ph.D., Botanist

Fee: \$230 (Member) /\$276 (Nonmember)

Limit: 16

Certificate: Core: FB/HD; Elective: all certificates

CEU: 1 MCH

FERNS OF HORN POND MOUNTAIN

Ferns have been around for more than 300 million years, and in that time the diversification of their form has been phenomenal. Join Don Lubin as he investigates the ferns of Horn Pond Reservation in Woburn, MA. Horn Pond is crossed by rocks such as diorite and gabbro, making it a great home for ferns that prefer a “sweeter” habitat. We hope to see two *Asplenium* species, two *Woodsias*, and a *Selaginella*, as well as numerous more common ferns. Expect some climbing and off-trail hiking. Bring a hand lens if you have one, and any fern fronds you would like Don to identify.

Saturday, September 20, 11:30 a.m.-3 p.m.

Woburn, MA

Program Code: FDT1027

Instructor: Don Lubin, Fern Enthusiast

Fee: \$33 (Member) /\$40 (Nonmember)

Limit: 12

Certificate: Elective: FB/Adv.FB



botany + conservation



INTRODUCTION TO BOTANY

Learn botany from dedicated instructor and plant nomenclature specialist Kanchi Gandhi. Among the topics to be explored: plant cells and tissues, anatomy and morphology, reproduction, nutrition, growth and development, plant diversity, evolution, classification, and nomenclature. This course, which offers both lecture and laboratory activities, will introduce botany to new students or serve as a refresher course. Required

text: *Botany for Gardeners* by Brian Capon.
Class will not meet on November 11.

**Tuesdays, September 23, 30, October 7, 14,
21, 28, November 4, 18, 6:30–8:30 p.m.**

Harvard University Herbaria, Cambridge, MA

Program Code: BOT1010

Instructor: Kanchi N. Gandhi, Botanist,
Harvard University

Fee: \$225 (Member) /\$270 (Nonmember)

Limit: 20

Certificate: Core: FB/HD; Elective: all
certificates

Cosponsor: The Arnold Arboretum of Harvard
University

CEU: 1 MCH

WOODLANDS OF THE MINERAL HILLS

The Mineral Hills Conservation Area is a low range of hills in Northampton, MA, with unusual geology. We will visit the section of the site that includes a former rock quarry as well as an adjacent hickory–hop hornbeam slope and chestnut oak–dominated ridge. The flora here are varied, and the narrow band of hickory–hop hornbeam forest is the richest plant community of all. We will see interesting grasses, asters, goldenrods, and more. Please wear sturdy footwear and bring plenty of water; the trail is steep at times and we will go off-trail to botanize along the rocky outcrops.

Wednesday, September 24, 10 a.m.–1 p.m.

Northampton, MA

Program Code: FDT2060

Instructor: Laurie Sanders, Radio Personality,
Ecologist, and Cofounder of A Natural Focus

Fee: \$28 (Member) /\$35 (Nonmember)

Limit: 15

Certificate: Elective: FB/Adv.FB

CEU: 1 CFE

botany + conservation

NEW ENGLAND INVASIVE PLANTS: IDENTIFICATION, DOCUMENTATION, AND CONTROL

What's all the fuss? Botanists, ecologists, horticulturists, and conservation professionals are united in their concern about invasive plants, but there is still some confusion about what they are and what to do about them. Students will learn about the basic ecological problems created by these aggressive species and about the complicated and sometimes political issues involved, including the process by which a plant becomes labeled as invasive. You will learn to identify some of New England's most common invasive species through images, specimens, and short local field visits. Bring a lunch, hand lens, water, warm clothes, and appropriate footwear, as there may be some wet spots.

Friday, September 26; Saturday, September 27, 10 a.m.-4 p.m.

Garden in the Woods, Framingham, MA

Program Code: BOT5130

Instructor: Ted Elliman, Botanist

Fee: \$180 (Member) /\$215 (Nonmember)

Limit: 16

Certificate: Core: Adv.FB; Elective: all certificates

CEU: 1 CFE; 1 MCH

LICHENS ON MONUMENTS AND ROCK WALLS IN CEMETERIES

This workshop will provide an introduction to lichens and explore the assemblages of lichens that colonize monuments and rock walls in cemeteries. In the morning, we will use stereoscopes to examine lichen features and distinguish species. During the after-

noon, we will visit Mount Wadsworth Cemetery in Sudbury, MA, to study rock-colonizing lichens, examining the microhabitats that affect their distribution and the impact of lichens on rock surfaces. A photographic guide and lichen key will be provided for the field identifications. Bring a 10x lens and a bag lunch.

Saturday, September 27, 10 a.m.-3 p.m.

Garden in the Woods, Framingham, MA

Program Code: FDT7016

Instructor: Elizabeth Kneiper, Lichenologist

Fee: \$66 (Member) /\$88 (Nonmember)

Limit: 15

Certificate: Elective: FB/Adv.FB

PONEMAH BOG

The 75-acre Ponemah Bog Sanctuary features a 3-acre pond surrounded by a floating sphagnum mat and by oak and pitch pine woods. The pond and bog are easily accessible by a narrow boardwalk, which includes spur trails to four viewing platforms. We should see a host of bog plants, including pitcher plants, sundews, and tamaracks. The beauty of this kettle-hole bog is heavenly, and in fact, according to Longfellow, Ponemah means "land of the hereafter." Bring a bag lunch and a hand lens if you have one; be prepared for wet footing.

Saturday, October 4, 10 a.m.-2 p.m.

Amherst, NH

Program Code: FDT1092

Instructor: Roland "Boot" Boutwell, Naturalist

Fee: \$38 (Member) /\$46 (Nonmember)

Limit: 10

Certificate: Field: all certificates

botany + conservation

ESTABROOK WOODS FROM BOAZ'S MEADOW TO BATEMAN'S POND

Estabrook Woods, a glacially carved and adorned landscape, is the largest contiguous forested preserve east of Interstate 495 in Massachusetts. Much of the woodland has been undisturbed for more than two centuries. It supports a diversity of locally rare plants and exemplary natural communities. In the fall, the vast hardwood forests, shrub swamps, and boggy kettle holes come into glorious color. Golden canopies of sweet birch and witch-hazel, soggy pockets of vermillion blueberry leaves, white drifts of cotton-grass sedge, and towering bronzed oaks are complemented by woodland asters, goldenrods, and late season fungi. Explore more than 1,200 acres of forest preserve, focusing on its northwestern reaches between Boaz's Meadow (a beautiful boggy kettle hole) and the overlooks at Bateman's Pond. This walk will cover about 3.5 miles of trails, some of which are rocky and uneven. Sturdy hiking shoes are recommended. Bring a snack, camera, and water bottle.

Sunday, October 5, 1:30-4:30 p.m.

Concord, MA

Program Code: FDT1125

Instructor: Cherrie Corey, Naturalist, Educator, and Photographer

Fee: \$28 (Member) /\$35 (Nonmember)

Limit: 16

Certificate: Elective: all certificates

FRAMEWORK TREES OF NEW ENGLAND

Trees are the dominant plant type of New England, where forests cover most of the land area. This course will address the identification and natural history of individual



species as well as forest ecology. Since understanding today's forests requires familiarity with their history, we will review the changing landscape from the Ice Age through European settlement. Students will learn to identify native New England trees and their habitats, recognize different-aged stands (pioneer, second growth, and other growth), and become familiar with the forest communities of the northeastern temperate region, with attention to the impact of natural and human disturbances on different communities. For weekend field studies, we will head off-site to explore a variety of forests. Bring a bag lunch and water for the off-site trips.

Tuesdays, October 7, 14, 21, 28, 6:30-8:30 p.m.;
Saturday, October 18, 12-4 p.m.; **Sunday,**
October 26, 9 a.m.-1 p.m.

Garden in the Woods, Framingham, MA, and other sites

Program Code: BOT3200

Instructor: Karen Sebastian, Principal, Karen Sebastian, LLC, Landscape Architecture

Fee: \$246 (Member) /\$290 (Nonmember)

Limit: 16

Certificate: Core: FB; Elective: all certificates

CEU: 1 CFE; 1 MCH

botany + conservation



IDENTIFYING TREES USING BARK AND HABITAT CLUES: MERRIMACK RIVER CONSERVATION AREA

Have you ever looked at a tree in winter and wondered what it might be? This program is part of an ongoing series on the trees found in different habitats. Since bark provides the best clue to tree ID for nearly half the year, we will key out trees using bark to see what we can learn. You will become familiar with bark that is characteristic of different trees in different habitats and at different stages of growth. Merrimack River Conservation Area is a northern large-river floodplain. We will delve into the reasons we find different trees there and where, even within the larger habitats, we might find microhabitats with different trees and plants. Bring binoculars, water, appropriate clothing, lunch, water-

proof shoes, and the book *Bark* by Michael Wojtech if you have a copy. This hike along a floodplain is flat and relatively easy, but the path can be muddy in spots.

Saturday, October 18, 10 a.m.-3 p.m.

Merrimack River Conservation Area
Floodplain Forest, Concord, NH

Program Code: FDT1123

Instructor: Nancy Goodman, Naturalist

Fee: \$47 (Member) /\$58 (Nonmember)

Limit: 12

Certificate: Field: FB; Adv.FB

CEU: 5 ISA; 1 CFE; 1 MCH

WILD FRUITS

Spring and summer flowers produce a bounty of wild fall fruits that we will discover in this hands-on workshop on fruit form, function, and diversity. We will study the significance of fruits in the flowering plant life cycle and then examine and dissect diverse fruit types, from capsules and follicles to pomes and drupes. You will learn fruit terminology and practice constructing and using dichotomous keys to sort out the remarkable variety of fruits produced by flowering plants. We will look at seed-dispersal mechanisms, the connection between fruit and seed forms, and strategies for seed dispersal. You are encouraged to bring fruit specimens from your own gardens for dissection and identification. Pack a bag lunch.

Sunday, October 19, 10 a.m.-4 p.m.

Garden in the Woods, Framingham, MA

Program Code: BOT1023

Instructor: Judith Sumner, Ph.D., Botanist,
and Author

Fee: \$80 (Member) /\$96 (Nonmember)

Limit: 16

Certificate: Elective: all certificates

CEU: 4 AOLCP; 1 MCH

botany + conservation

ECOLOGY OF HIGHSTEAD

Join ecologist Ed Faison for a field walk at Highstead, a 100-acre woodland preserve in southwestern Connecticut. Ed's walk will introduce Highstead's ecological research and monitoring program and cover a range of topics and habitats. These topics include: long-term forest monitoring; sprouting response and survival of mountain laurel under different environmental conditions; results of 15 years of deer exclusion on understory plant dynamics; response of native vegetation to a pond-side *Phragmites* removal project; and grassland and woodland bird monitoring. We will walk mostly on trails, with some off-trail excursions. The ground will be wet, muddy, and uneven in places. Boots and field pants are recommended. Bring a bag lunch.

Sunday, October 19, 10 a.m.-1 p.m.

Highstead, Redding, CT

Program Code: FDT6022

Instructor: Ed Faison, Ecologist

Fee: \$28 (Member) /\$35 (Nonmember)

Limit: 15

Certificate: Elective: FB/Adv.FB

HURRICANES, INVASIONS, AND RESTORATION: A SALT MARSH ODYSSEY

Salt marshes are among the most productive ecosystems on earth and provide coastal communities with an abundance of goods and services including food, shoreline protection, water filtration, and wildlife habitat. Salt marshes are also subjected to stress and degradation from natural disturbances such as hurricanes, and from anthropogenic pressures such as development, invasive species, and climate change. Join University of Rhode Island researchers on an exploration of the Galilee Salt Marsh and identify ecological and social changes that shaped the floral and faunal communities of the area. We will meander through the marsh in both wet and dry areas. Bring water, knee-high boots, and clothing to protect against wet and ticks. Consider adding a little extra time for a casual seafood lunch afterward on Narragansett Bay, which is just a few minutes from our site.

Saturday, October 25, 10 a.m.-1 p.m.

Galilee Salt Marsh, Narragansett, RI

Program Code: FDT7018

Instructor: Laura Meyerson, Professor,
University of Rhode Island

Fee: \$28 (Member) /\$35 (Nonmember)

Limit: 16

Certificate: Elective: all certificates

STRANGE BUT TRUE: FASCINATING PLANT BEHAVIORS

Do you think plants are passive, quiet creatures that simply react to their environment? Think again. A plant's biology and behavior are as complex as any animal's. This colorful presentation will introduce you to many intriguing plant activities, including clever mimicry, parasitism, carnivory, foraging, and motion. Share your own stories of plants, too.

Wednesday, October 22, 12-1:30 p.m.

Garden in the Woods, Framingham, MA

Program Code: LEC5163

Instructor: Elizabeth Farnsworth, Senior Research Ecologist, New England Wild Flower Society

Fee: \$10 (Member) /\$15 (Nonmember)

Certificate: Elective: FB

botany + conservation

NEW ENGLAND'S RARE PLANTS AND THEIR CONSERVATION UNDER CLIMATE CHANGE

Annual Native Plant Lecture and Certificate Awards

Bill Brumback will discuss rare plant conservation in New England. He will highlight the Society's successes (and failures) in introduction efforts and describe how the Society is planning for the impact of climate change on rare plants. After the talk, certificates will be awarded to new graduates of our certificate programs in Native Plant Studies. Refreshments will follow.

Sunday, October 26, 1:30-3:30 p.m.

Garden in the Woods, Framingham, MA

Program Code: LEC1020

Instructor: Bill Brumback, Director of Conservation, New England Wild Flower Society

LICHENS OF THE NORMAN BIRD SANCTUARY

The Norman Bird Sanctuary features over 300 acres and 7 miles of hiking trails. Join us as we explore mature woodlands, open meadows, rock walls, and puddingstone outcrops to study lichen assemblages. The lichens on site reflect the sanctuary's proximity to the ocean and are typical for southern Massachusetts and coastal Rhode Island. Participants are asked to bring a 10x hand lens. A guide and checklist of the most common lichens will be provided for the walk. The fee for the trip includes admission to the sanctuary.

Sunday, November 2, 1-4 p.m.

Norman Bird Sanctuary, Middletown, RI

Program Code: FDT7009

Instructor: Elizabeth Kneiper, Lichenologist

Fee: \$31 (Member) / \$38 (Nonmember)

Limit: 15

Certificate: Elective: FB/Adv.FB

WETLAND SHRUBS IN WINTER

Learn to identify wetland shrubs using a combination of branching patterns, bud and bark characteristics, habitat, persistent fruits,

galls, and marcescent leaves. With a pond, a stream, and a bog, Garden in the Woods provides an excellent field site for study. We will begin with a short session indoors, then head into the Garden for a close look at 15 to 20 native New England shrubs (plus a non-native invasive or two) that grow in and around wetlands. Bring lunch and a hand lens if you have one, and dress for the weather.

Instructor: Roland "Boot" Boutwell, Naturalist

Fee: \$53 (Member) / \$64 (Nonmember)

Certificate: Elective: all certificates

CEU: 4 ISA; 1 MCH

Cosponsor: Massachusetts Association of Conservation Commissions

Choose one of two sections:

Tuesday, November 18, 10 a.m.-2 p.m.

Garden in the Woods, Framingham, MA

Program Code: WET3020

Limit: 16

Wednesday, February 4, 10 a.m.-2 p.m.

Garden in the Woods, Framingham, MA

Program Code: WET3021

Limit: 16

botany + conservation

UNDERSTANDING BOTANICAL AND HORTICULTURAL NAMES: PLANT SYSTEMATICS MODULE 1

This class examines plant nomenclature and gives students an opportunity to sort out the confusion often associated with plant names. We will discuss common names, binomial scientific names, and the history of nomenclature since Linnaeus. We will also review the current rules of nomenclature and practice deducing plant characteristics from plant names. Attention is given to the names of species and hybrids in cultivation and the meaning of cultivar names.

Sunday, November 23, 1-4 p.m.

Garden in the Woods, Framingham, MA

Program Code: BOT2205

Instructor: Judith Sumner, Ph.D., Botanist and Author

Fee: \$46 (Member) /\$54 (Nonmember)

Limit: 16

Certificate: Core: Adv.FB; Elective: all certificates

CEU: 3 ISA; 1 CFE; ½ MCH

SHRUBS IN WINTER

Even without leaves, many shrubs are still recognizable in late fall and winter. This field study focuses on macrocharacteristics such as branching patterns, growth habits, bark, persistent fruit, galls, and habitats to identify more than 20 native New England shrubs. We will also discuss the natural history of the shrubs we see. The program begins in the classroom and then heads out into the field. We will look for species such as witch-hazel, high-bush blueberry, and, of course, winterberry. Bring a lunch and a hand lens. Dress warmly and wear appropriate footwear—Garden trails are not plowed when it snows.

Saturday, December 6, 10 a.m.-2:30 p.m.

Garden in the Woods, Framingham, MA

Program Code: BOT3312

Instructor: Roland “Boot” Boutwell, Naturalist

Fee: \$60 (Member) /\$72 (Nonmember)

Limit: 15

Certificate: Elective: all certificates

CEU: 4 ISA; 1 CFE; 1 MCH

PLANTS, PAPER, AND PEOPLE: THE STORY OF GROVE

Join eco-artist and paper-maker Louise Barteau for a slideshow and conversation about her ongoing restoration project GROVE. Located in Carpenter Woods, a birding park in Philadelphia, GROVE is a small-scale restoration project that began as an art project with paper trees and ended with real trees. Louise uses art, community, and persistence to transform a mature Japanese knotweed forest into a native plant community.

Wednesday, December 3, 12-1:30 p.m.

Garden in the Woods, Framingham, MA

Instructor: Louise Barteau, eco-artist and paper-maker

Program Code: LEC3638

botany + conservation

CONSERVATION BIOLOGY

This course provides a basic background in the principles of conservation biology to help you become a more effective conservation advocate and steward. In the U.S., people have been talking about conservation since the 1800s; however, the terms *conservation biology* and *biodiversity* have been in use for only a few decades. You will discuss the meaning of these terms at many biological levels and landscape scales, as well as current approaches to conservation biology. Threats to biodiversity and ecosystems will be analyzed. You will learn what makes a species vulnerable to extinction and which strategies and tools can protect endangered species. Readings and video clips will be used to explore the interdisciplinary nature of conservation biology and the ways that humans can evaluate and mitigate the impacts of human disruption to ecosystems. Participants will receive a bibliography of resources for further study. Bring a bag lunch.

Saturdays, January 17, 24, 31, 10 a.m.-3:30 p.m.

Garden in the Woods, Framingham, MA

Program Code: BOT5100

Instructor: Nancy M. Eyster-Smith, Ph.D.,
Botanist

Fee: \$254 (Member) / \$300 (Nonmember)

Limit: 16

Certificate: Core: Adv.FB; Elective: all
certificates

CEU: 1 CFE

PLANT SYSTEMATICS MODULE 2

The second of five Plant Systematics modules, this class will examine tracheophyte families, starting with free-sporing plants (e.g., ferns) and ending with three major groups of seed plants: non-flowering seed plants (i.e., conifers); magnoliids (i.e., primitive dicots); and monocots. With text and images, the class will describe critical features for family-level identification and for representative genera within those families in New England. The class will also focus on modern taxonomy and family arrangements as set forth by Judd et al. in *Plant Systematics: A Phylogenetic Approach*.

Sunday, January 25, 1-4 p.m.

Garden in the Woods, Framingham, MA

Program Code: BOT2230

Instructor: Arthur Haines, Research Botanist,
New England Wild Flower Society

Fee: \$48 (Member) / \$56 (Nonmember)

Limit: 20

Certificate: Core: Adv.FB; Elective: all
certificates

CEU: ½ MCH



botany + conservation

AMAZING ALPINE COMMUNITIES OF THE NORTHEAST

The high alpine summits of New England, New York, and eastern Canada contribute significantly to the plant, bird, and invertebrate diversity of northeastern North America. Well-known summits such as Mount Washington have been the focus of ecological inquiry since the early 1800s. Beyond the Presidential Range and such other well-known mountains as Katahdin, Mont Jacques-Cartier, and Gros Morne are many little-known eastern alpine mountain ranges, unified by the treeless alpine communities on their slopes and summits but facing their own unique conservation challenges. Join us for a presentation and lecture on the natural history of the lesser-known alpine ecosystems of Québec, Labrador, and Newfoundland and for a book signing by Liz Willey and Mike Jones, editors of the *Eastern Alpine Guide: Natural History and Conservation of Mountain Tundra East of the Rockies* and co-founders of *Beyond Ktaadn* (beyondktaadn.org).

Wednesday, February 25, 7-8:30 p.m.

Garden in the Woods, Framingham, MA

Program Code: LEC4020

Instructor: Michael Jones and Lisabeth Willey, Ecologists and Authors

Fee: \$13 (Member) /\$15 (Nonmember)

Certificate: Elective: FB/Adv.FB



PLANT SYSTEMATICS MODULE 4

This fourth of five Plant Systematics modules, this class examines advanced tricolpate families often referred to as euasterids (e.g., Lamiaceae, Plantaginaceae, Campanulaceae, Asteraceae). The lecture will use text and images to describe critical features for family-level identification and representative genera within those families in New England. The class will focus on modern taxonomy and family arrangements as set forth in Judd et al. *Plant Systematics: A Phylogenetic Approach* and later publications.

Sunday, March 1, 1-4 p.m.

Garden in the Woods, Framingham, MA

Program Code: BOT2240

Instructor: Arthur Haines, Research Botanist, New England Wild Flower Society

Fee: \$48 (Member) /\$56 (Nonmember)

Limit: 20

Certificate: Core: Adv.FB; Elective: all certificates

CEU: ½ MCH



OBSERVING AND DRAWING TO LEARN: BOTANY IN THE FIELD

This two-part workshop will explore Pleasant Valley Preserve. Located in the watershed of the wild and scenic Eightmile River, Pleasant Valley Preserve has many splendid natural features, including the river, open fields, glacial landforms, and wooded uplands. The site also has a historic connection to the Lyme School of Impressionist Painters; Oscar Fehrer (1872-1958) maintained a summer studio nearby and often painted at the site. Students may take one or both sessions of this workshop.

Lyme, CT

Instructor: Judy Preston, Local Ecologist

Certificate: Elective: all certificates

Choose one or attend both sessions:

Observing to Learn: Botany in the Field Sunday, September 28, 10 a.m.-1 p.m.

Program Code: ART1062

The first session of this workshop will provide you with an overview of the unique

natural features and habitat ecology of Pleasant Valley, emphasizing plants and plant communities and fostering ecological awareness. You will learn to hone your observation skills, look more carefully at your surroundings, and record the unique qualities of plants. Bring a bag lunch.

Fee: \$28 (Member) / \$35 (Nonmember)

Limit: 20

Drawing to Learn: Botany in the Field Sunday, October 5, 10 a.m.-3 p.m.

Program Code: ART1063

In the second session of this workshop you will learn how to draw what you've seen in the field, using simple rendering techniques as well as inexpensive and field-tested tools. You will receive tips and tools for keeping a field journal as a way to learn about plants and local ecology. An overview of useful field guides and resources for deciphering your renderings will be provided. Bring a bag lunch.

Fee: \$66 (Member) / \$80 (Nonmember)

Limit: 15

art in nature

PLANT MACROPHOTOGRAPHY

We all know how gorgeous plants can be, but capturing their beauty and nuances using a camera can be a challenge. Botanist Glen Mittelhauser has contributed many beautiful photographs to Go Botany and other projects. Join him for a half-day workshop in the field to learn how to use your point-and-shoot digital camera to portray plants both accurately and aesthetically using macrophotography. Bring a bag lunch.

Saturday, October 4, 11 a.m.-3 p.m.

Gouldsboro, ME

Program Code: ART6038

Instructor: Glen Mittelhauser, Director, Maine Natural History Observatory

Fee: \$53 (Member) /\$64 (Nonmember)

Limit: 10

Certificate: Elective: all certificates

Cosponsor: Maine Natural History Observatory



INTRODUCTION TO BOTANICAL DRAWING

In this workshop, you will learn to observe carefully and then accurately render an amazing variety of plant forms. Using various media and techniques of gesture and contour drawing, you will discover the best way for you to draw what you see. Learn tips for sketching the correct proportions of an object and then study how to shade that drawing to create a three-dimensional form. You will draw enough to enjoy drawing anything. All levels are welcome. Bring water and a snack or lunch.

Wednesdays, October 29, November 5, 12, 19, 10 a.m.-1 p.m.

Garden in the Woods, Framingham, MA

Program Code: ART1061

Instructor: Carol Govan, Artist and Naturalist

Fee: \$158 (Member) /\$190 (Nonmember)

Limit: 12

Certificate: Elective: all certificates

Cosponsor: Mass Audubon

CEU: 1 MCH

COLOR TECHNIQUES IN BOTANICAL ILLUSTRATION

Learn how to observe and create colors using watercolors and colored pencils. Color is easier to apply to an image after you have become comfortable adding tone to a pencil drawing. A prerequisite of this workshop is "Introduction to Botanical Illustration" or previous drawing experience. Bring water and a snack or lunch.

Wednesdays, January 7, 14, 21, 28
(snow date **February 4**), 10 a.m.-1 p.m.

Garden in the Woods, Framingham, MA

Program Code: ART1066

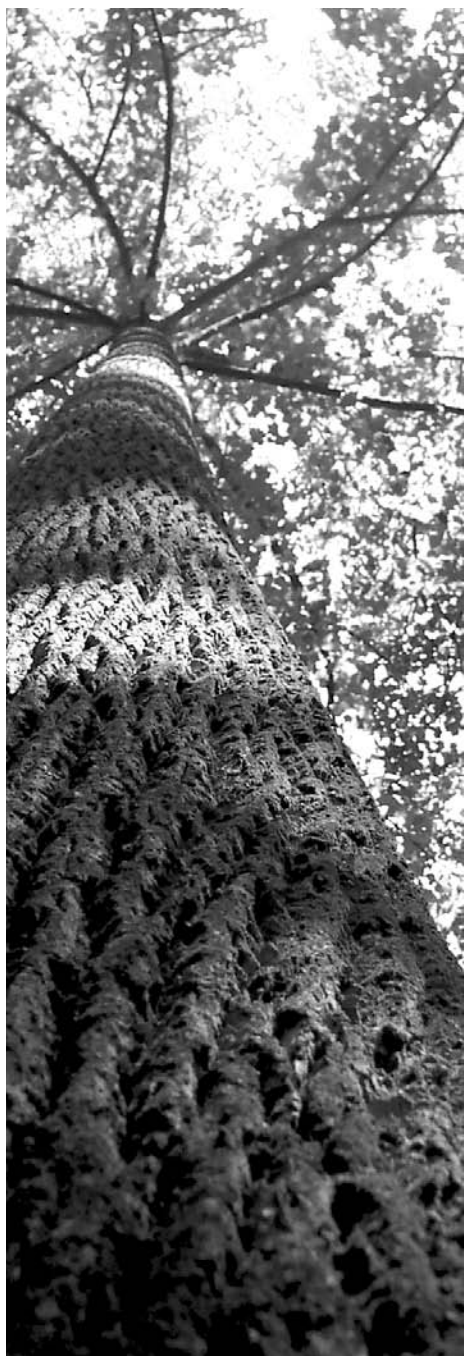
Instructor: Carol Govan, Artist and Naturalist

Fee: \$158 (Member) /\$190 (Nonmember)

Limit: 12

Certificate: Elective: all certificates

Cosponsor: Mass Audubon



MEET THE TREES

Ever wonder what the trees have to say about history, weather, insects, or the landscape? In this class, you will get to meet some of the Garden's largest plants and find out how they survive and grow. We will create books in which to collect bark and leaf rubbings as we wander through the fall woods. For children with adult companions. Pre-registration and payment is required for each adult and child.

Sunday, October 5, 1:30-3:30 p.m.

Garden in the Woods, Framingham, MA

Program Code: FAM7525

Instructor: Tracy Phipps, Naturalist

Fee: \$12 (Member) /\$14 (Nonmember)

Limit: 24

FULL MOON NIGHT HIKE

Near the night of the Beaver Moon, we will venture out into the dark forest to enjoy the night-time sights, smells, and sounds. Who is still awake? Why does the moon appear to change its shape? And what is a blue moon? After the walk, we will enjoy hot cocoa and make a booklet of full-moon activities for months of full moons to come. For children with adult companions. Pre-registration and payment is required for each adult and child.

Friday, November 7, 6:30-8:30 p.m.

Garden in the Woods, Framingham, MA

Program Code: FAM6500

Instructor: Tracy Phipps, Naturalist

Fee: \$12 (Member) /\$14 (Nonmember)

Limit: 24

children + families

WINTER WONDERS WALK

Come to Garden in the Woods to learn how foxes, rabbits, squirrels, turtles, frogs, trees, and wildflowers survive the long winter months. We will make a track-finder and hike down into the snowy woods, over an icy brook, and through a meadow looking for signs of winter residents and their activities. At afternoon's end, we will enjoy hot drinks and a winter craft activity. For children with adult companions. Pre-registration and payment is required for each adult and child.

Sunday, January 18, 1:30-3:30 p.m.

Garden in the Woods, Framingham, MA

Program Code: FAM1800

Instructor: Tracy Phipps, Naturalist

Fee: \$12 (Member) /\$14 (Nonmember)

Limit: 24



SALAMANDER CELEBRATION

Join our annual celebration of this shy and beautiful woodland creature and learn about the several special kinds of salamander that live at Garden in the Woods—and perhaps in your own backyard. You will walk to a vernal pool to look for salamanders and their eggs, then make a salamander craft and an origami jumping frog to take home. For children with adult companions. Pre-registration and payment is required for each adult and child.

Sunday, March 22, 1:30-3:30 p.m.

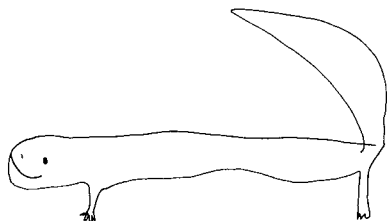
Garden in the Woods, Framingham, MA

Program Code: FAM3600

Instructor: Tracy Phipps, Naturalist

Fee: \$12 (Member) /\$14 (Nonmember)

Limit: 24



become a member

For immediate discounts on programs, join or renew when you register.

Members help conserve and promote the region's native plants to ensure healthy, biologically diverse landscapes.

Membership benefits include:

- 20% discount on educational programs throughout New England
- Priority program registration
- Annual subscription to Society publications
- Monthly member e-newsletter
- Discounts at a wide range of regional and mail-order nurseries through our Nursery Partner Program and our Garden Shops
- Borrowing privileges at our 4,500-volume botanical library (*Individual with Garden Access level and up*)
- Invitations to special, members-only events (*Individual with Garden Access level and up*).

Membership levels

- Individual \$40
- Individual with Garden Access \$55
- Family/Friends \$75
- Contributor \$115
- Supporter \$250
- Sustainer \$500
- Conservation Circle \$1,000+

For a full description of member benefits, please visit www.newenglandwild.org/membership or call 508-877-7630 x3104.

registration policies

Advance registration is required for all fee-based programs and is accepted on a first-come, first-served basis upon full payment. Upon registration, you will receive a confirmation email, including program locations and any recommended reading and supplies. Early registration is encouraged; programs with insufficient registration may be cancelled three to five business days before the scheduled start date. If your requested program is filled, you will be put on a waiting list and your credit card will not be charged or your check will be returned. If space in the program becomes available, you will be contacted according to your position on the waiting list. **Sorry, we cannot accept walk-in registrations.**

SOCIETY CANCELLATIONS, CHANGES, AND INCLEMENT WEATHER

The Society reserves the right to cancel programs, change times or locations, and substitute instructors.

If a program is cancelled by the Society, you will receive a full refund. In the event of any program change, you will be notified as soon as possible. Programs run rain or shine. However, in the event of extremely inclement weather, the Public Programs Department or instructor will make every effort to inform you by telephone or email of any change in plans.

CANCELLATIONS AND REFUND

No refunds or transfers can be given for withdrawals within a week of the program start date, for programs already in progress, or for class sessions you have not attended.

EQUAL ACCESS

If you need assistance or special accommodations, call 508-877-7630, ext. 3303, at the time you register or as soon as possible thereafter.

how to register

REGISTER ONLINE

Visit www.newenglandwild.org/programs.
We accept Visa or MasterCard.

REGISTER BY PHONE

Call 508-877-7630, ext. 3303.
We accept Visa or MasterCard.

REGISTER BY MAIL

Complete the registration form below and mail it with your payment to: Public Programs, New England Wild Flower Society, 180 Hemenway Road, Framingham, MA 01701. Use a separate copy of the form for each registrant. Make checks payable to New England Wild Flower Society. Please do not mail cash.

Name of person filling out form:

Participant's name (if different): Age (if under 18):

Address:

City, State, ZIP:

Email:

Phone: Day Evening

Course code	Course name	Start date	Fee
.....
.....
.....
.....
.....
.....
.....
.....
.....

Yes, I'm a member of New England Wild Flower Society member #

I am a current member of (cosponsor organization)

I want to join the Society. Please indicate membership-level fee here

I would like to enroll in a Certificate Program \$30 (This is a one-time fee.)

I would like to make a gift to the Annual Fund

PAYMENT

Total: \$

Check enclosed (payable to New England Wild Flower Society)

Credit card #

Visa MasterCard Exp. date CVC code

Name on card

Billing address (if different from above)

Signature

I have read and accept the Cancellation and Refund Policy Yes No

New England Wild Flower Society
is sponsoring a trip to

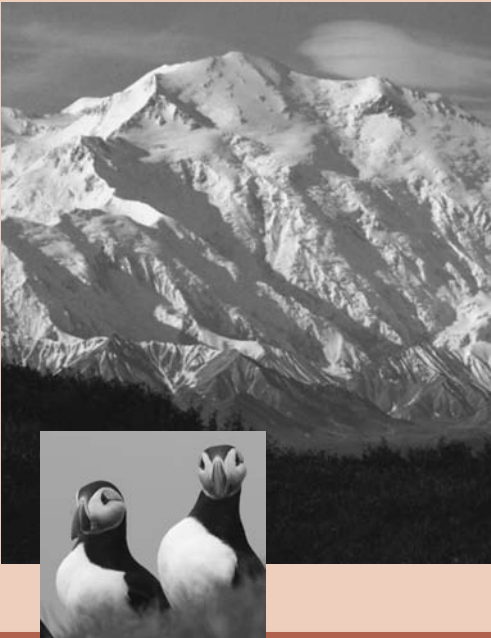
Alaska

Wildflowers, Wildlife,
& Spectacular Landscapes

June 24-July 5, 2015

With more than 1,500 plant species, Alaska offers a profusion of native flora from sea level to just below the snow line. Join the Society's John Burns to explore the wonderful wildflowers, wildlife, and spectacular landscapes of Alaska.

Details at
www.newenglandwild.org/learn/alaska



NEW ENGLAND WILD FLOWER SOCIETY

HEADQUARTERS & GARDEN IN THE WOODS

180 Hemenway Road

Framingham, Massachusetts 01701-2699

ADDRESS SERVICE REQUESTED